



MINISTRY
OF THE ENVIRONMENT

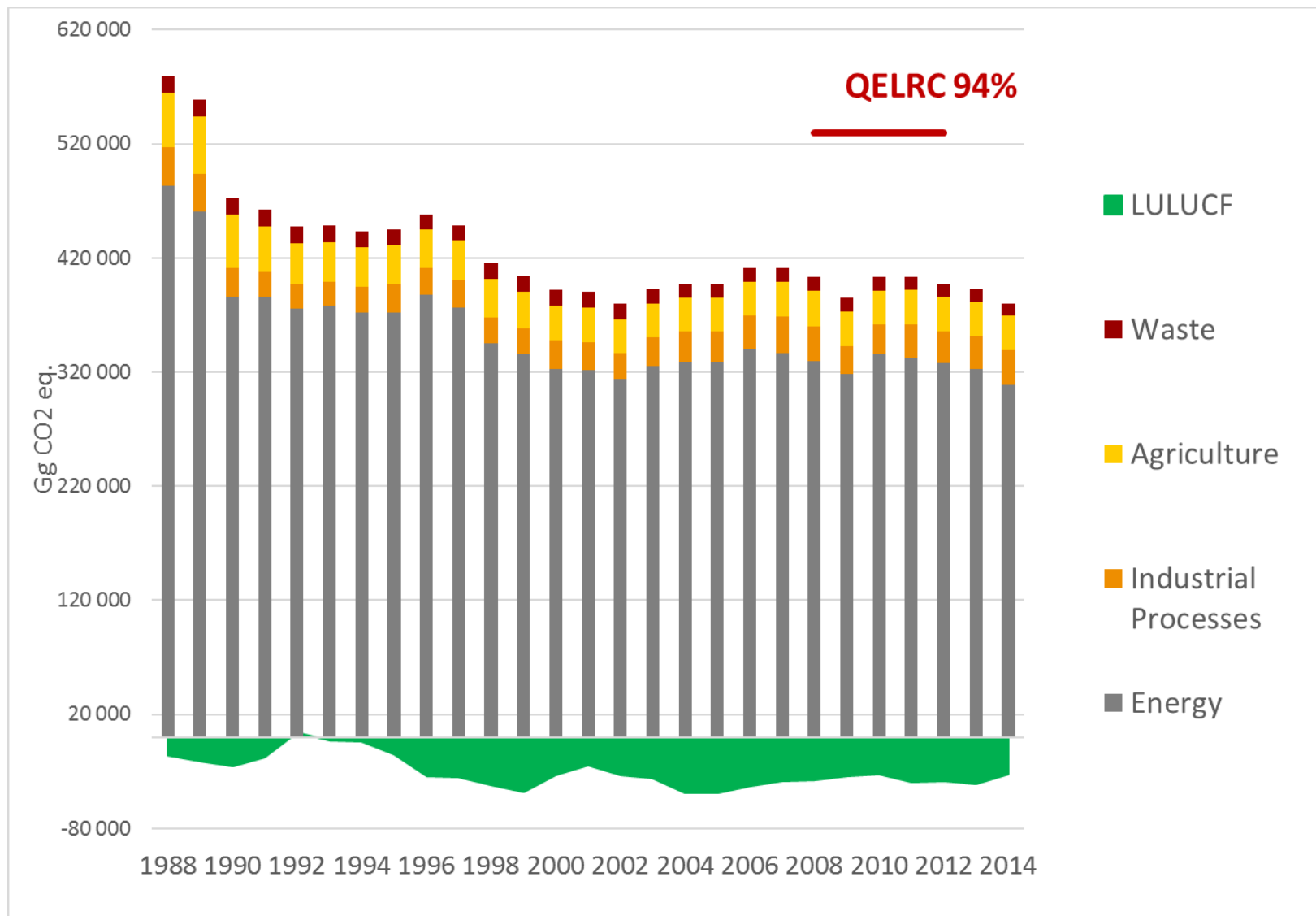
MULTILATERAL ASSESSMENT OF THE SECOND BIENNIAL REPORT POLAND



**SBI 45 Marrakech,
14 November 2016**



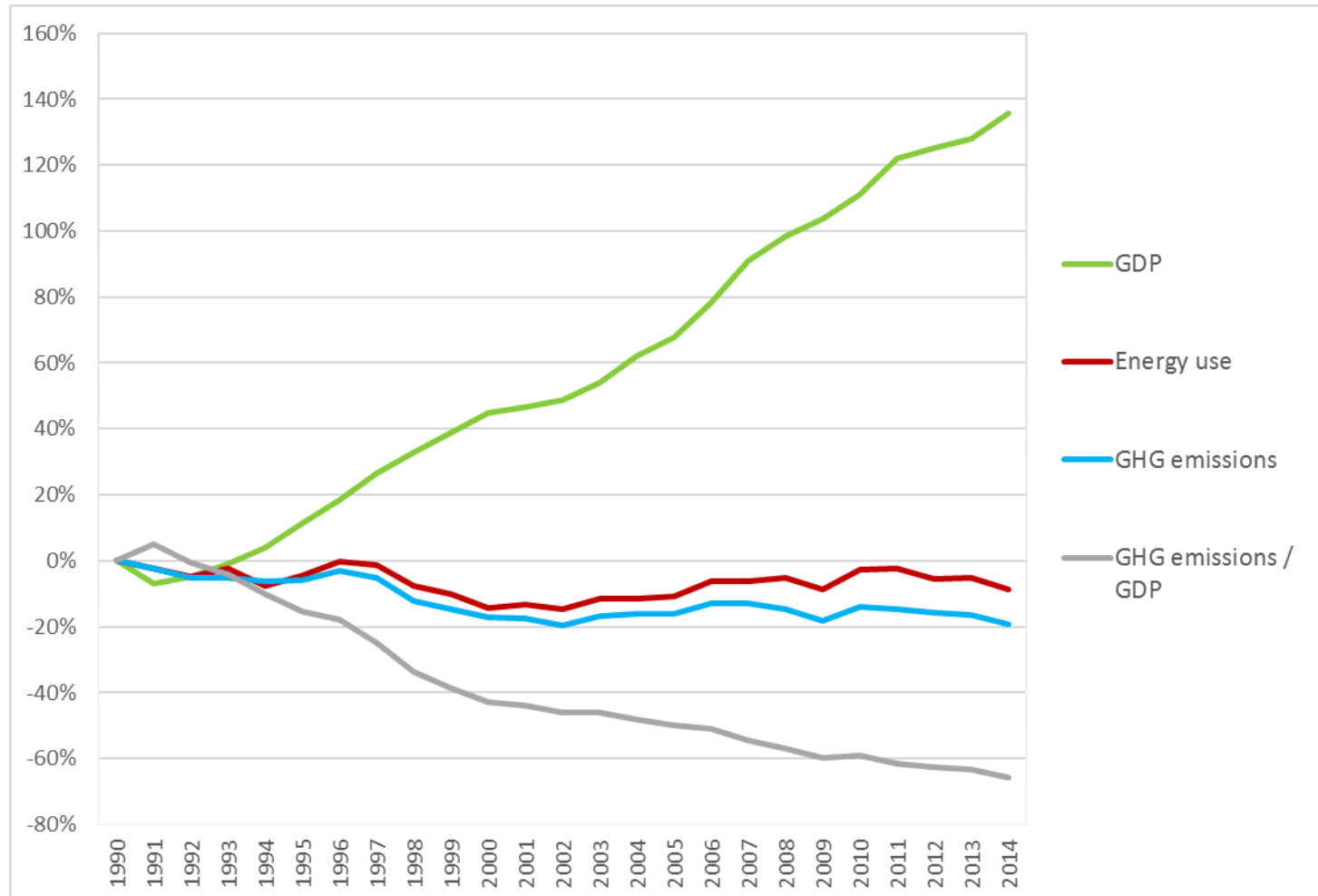
1988-2014 GHG reduction by sectors





GHG intensity of the economy (1)

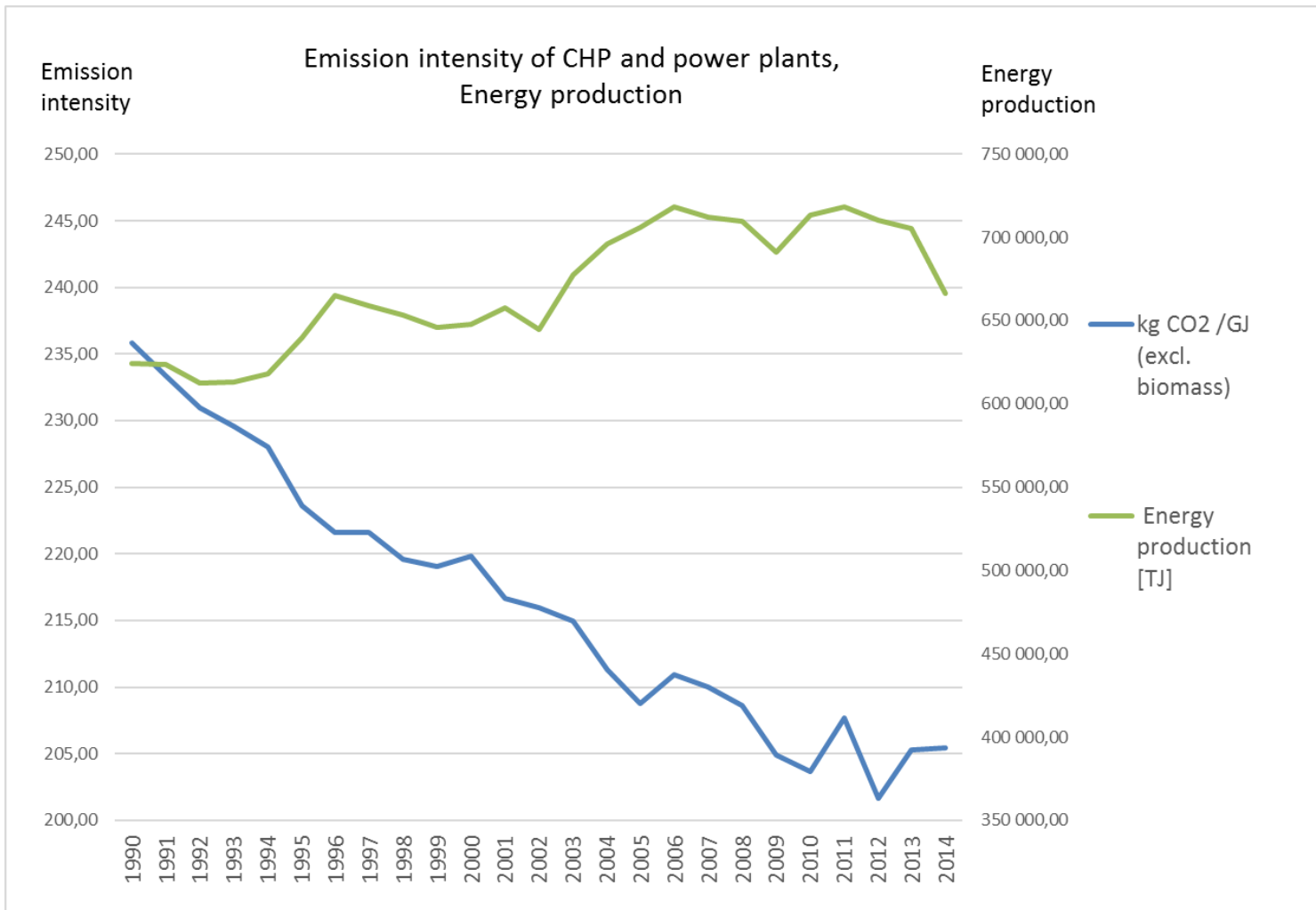
Since early 90-ties Poland has accomplished a zero-emission growth





GHG intensity of the economy (2)

CHP and power plants produce 47% of the emission in Energy sector



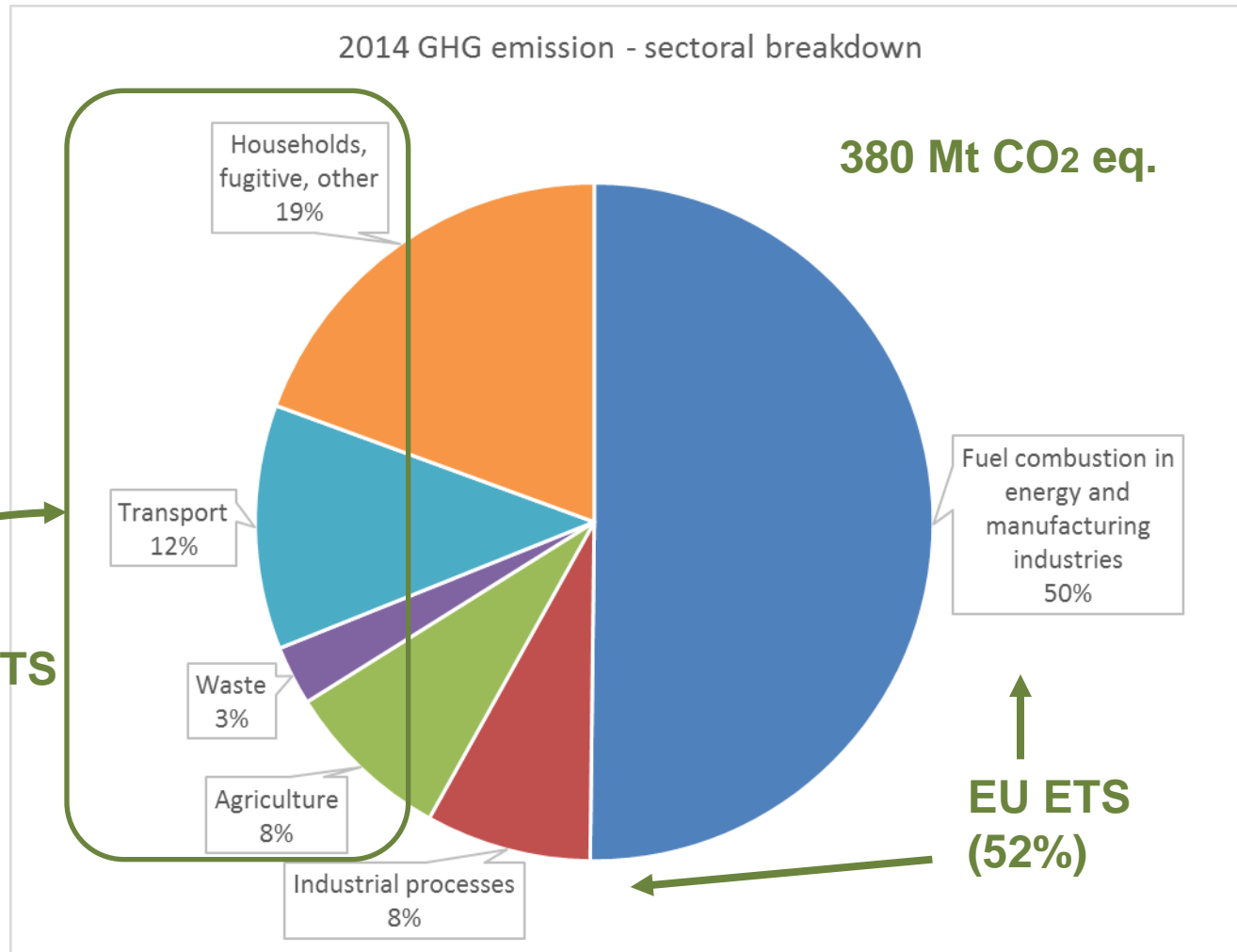


Emission reduction targets

| Target | Target 2020 EU | Target 2020 PL | PL 2014 performance vs target |
|--|----------------|--|-------------------------------|
| Total GHG emission reduction (reference year 1990) | -20% | No individual target | - |
| EU ETS GHG reduction (reference year 2005) | -21% | No individual target | - |
| Non-ETS GHG reduction (reference year 2005) | -10% | +14% (yearly limits) | below limits |
| Renewable energy in final energy consumption | 20% | 15% | 11,45% |
| Energy efficiency improvement | 20% | Internal target: development without increase in primary energy demand | |



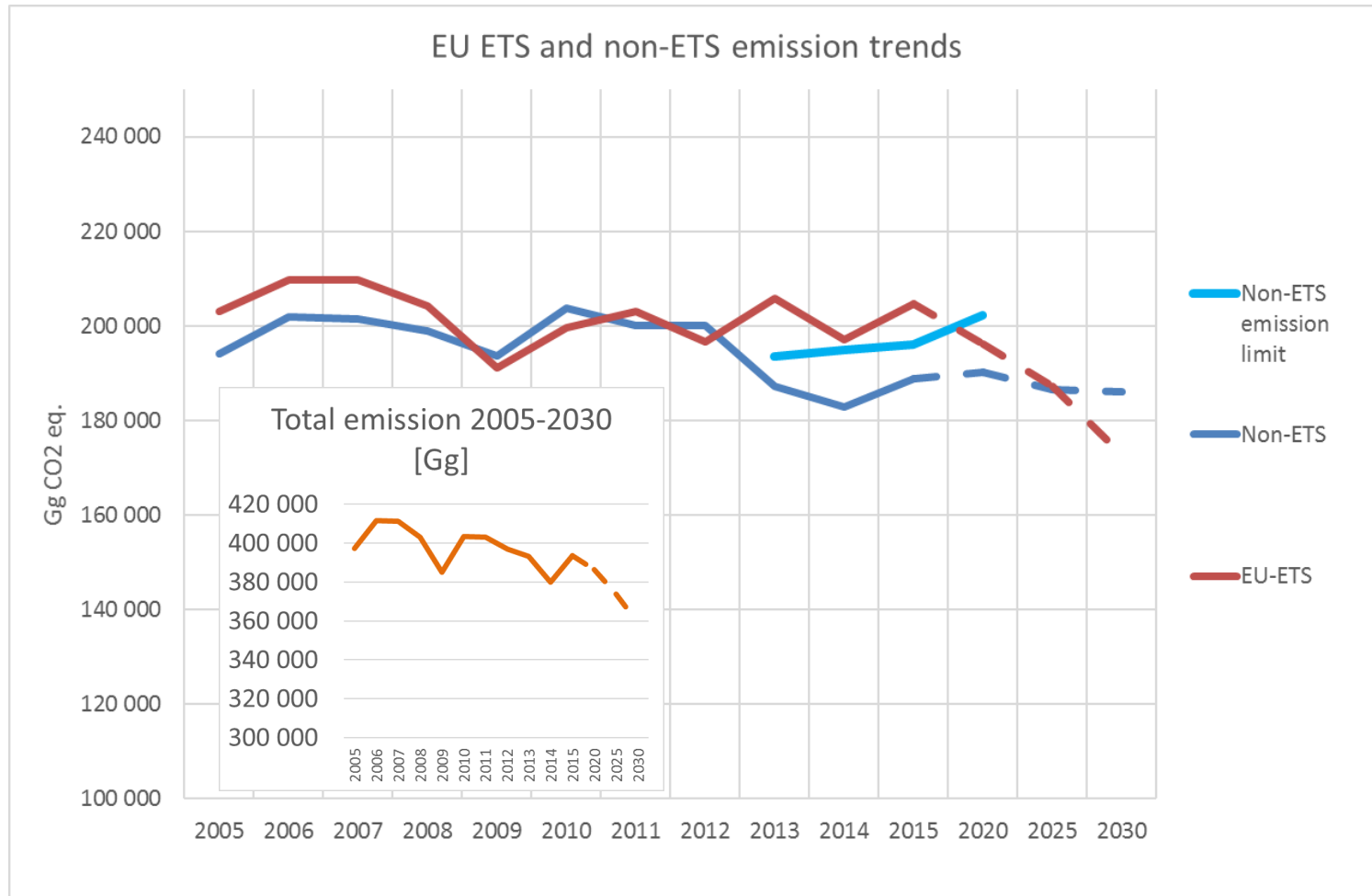
GHG emission by sectors (1)





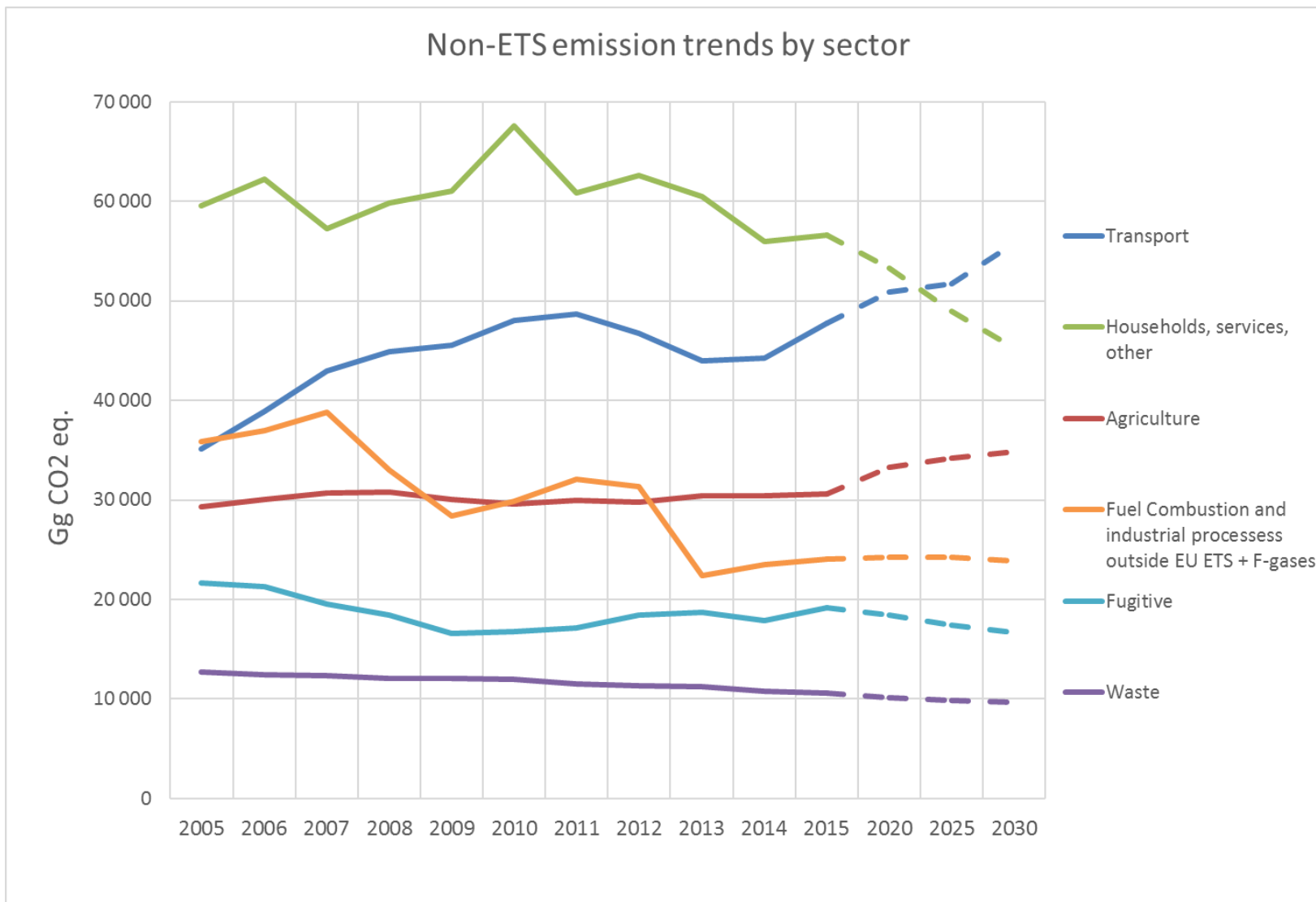
GHG emission by sectors (2)

EU-ETS emission is regulated by a market-based mechanism,
non-ETS emission is subject to emission limits (ESD limits)





GHG emission by sectors (3)





Major mitigation policies

- EU ETS mechanisms (modernisation, efficiency, new technologies)
- Energy mix shift to RES and nuclear energy
- Energy efficiency (industry, transport, buildings, district heating)
- RES in agriculture, transport, households, SMEs and public infrastructure



Mitigation policies - LULUCF

- National Forest Policy (1997) - permanent development of forests
- National Programme for the Augmentation of Forest Cover - assumption to increase the forest cover up to 30% in 2020 and up to 33% in 2050
- 1995 Act on the Protection of Agricultural and Forest Lands - framework preventing deforestation





MINISTRY
OF THE ENVIRONMENT



EMAS

Zweryfikowany
system zarządzania
środowiskowego

PL 2.14-003-30

THANK YOU